
Getting Started User Guide (UG105)

All Achronix Devices



Copyrights, Trademarks and Disclaimers

Copyright © 2023 Achronix Semiconductor Corporation. All rights reserved. Achronix, Speedster and VectorPath are registered trademarks, and Speedcore and Speedchip are trademarks of Achronix Semiconductor Corporation. All other trademarks are the property of their prospective owners. All specifications subject to change without notice.

NOTICE of DISCLAIMER: The information given in this document is believed to be accurate and reliable. However, Achronix Semiconductor Corporation does not give any representations or warranties as to the completeness or accuracy of such information and shall have no liability for the use of the information contained herein. Achronix Semiconductor Corporation reserves the right to make changes to this document and the information contained herein at any time and without notice. All Achronix trademarks, registered trademarks, disclaimers and patents are listed at <http://www.achronix.com/legal>.

Achronix Semiconductor Corporation

2903 Bunker Hill Lane
Santa Clara, CA 95054
USA

Website: www.achronix.com
E-mail : info@achronix.com

Table of Contents

| | |
|---|----|
| Chapter - 1: Overview | 5 |
| Chapter - 2: Achronix Tool Flow | 6 |
| Tool Flow | 6 |
| IP Flow | 6 |
| Chapter - 3: Launching Synplify Pro | 8 |
| GUI Mode | 8 |
| Batch Mode | 9 |
| Chapter - 4: ACE Execution Modes | 10 |
| GUI Mode | 10 |
| Command-line Mode | 11 |
| Batch Mode | 11 |
| Chapter - 5: The Quickstart Design | 12 |
| Introduction | 12 |
| Synthesizing with Synplify Pro | 12 |
| Creating Interface Subsystems and Running Place-and-Route | 17 |
| Creating Interface Subsystems | 20 |
| Chapter - 6: FAQs | 25 |
| Why is my device not listed in Synplify Pro or ACE? | 25 |
| Which simulators are supported? | 25 |
| I am in a perspective, but I would like to add a window from a different perspective. How do I do this? | 25 |
| I loaded an ACE project, but the information on its implementation is missing. How do I get that information? | 25 |
| How can I drive or observe signals when my device is running? | 25 |
| I am stuck and my question is not shown here. Who can I contact for help? | 25 |
| Revision History | 26 |

Chapter - 1: Overview

This guide serves as a concise introduction to the Achronix tool flow. After an overview of the tool and IP flow, the Quickstart design included with all ACE installations is used to illustrate the tool flow.

The Achronix design flow uses two software tools:

- Synplify Pro – used for design synthesis
- ACE – used for place-and-route of the design elements and for bitstream generation

Synplify Pro operates in GUI and batch modes and ACE operates in GUI, command-line, and batch modes.

Note



This user guide assumes that Synplify Pro and ACE are already installed. For help installing the tools or if issues are being encountered, such as problems with launching the tools or the desired device is missing, see the [ACE Installation and Licensing Guide \(UG002\)](#).

The following documents provide additional information on topics covered in this guide:

- [Synthesis User Guide \(UG018\)](#)
- [ACE User Guide \(UG070\)](#)

The following document provides useful information on topics not covered in this guide:

- [Simulation User Guide \(UG072\)](#)

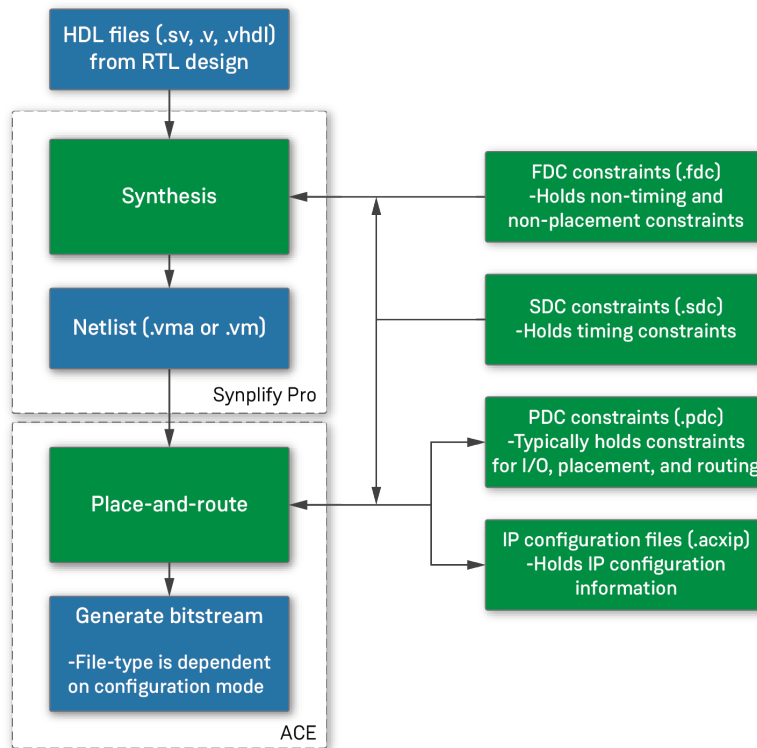
Chapter - 2: Achronix Tool Flow

Tool Flow

The Achronix design flow uses two tools:

- Synplify Pro – used for design synthesis
- ACE – used for place-and-route of design elements and for bitstream generation

The primary output of Synplify Pro is the design netlist which is imported into ACE for place-and-route. ACE also performs IP configuration, floorplanning, timing analysis, and more.



70541507-01.2023.31.01

Figure 1: Achronix Design Flow

IP Flow

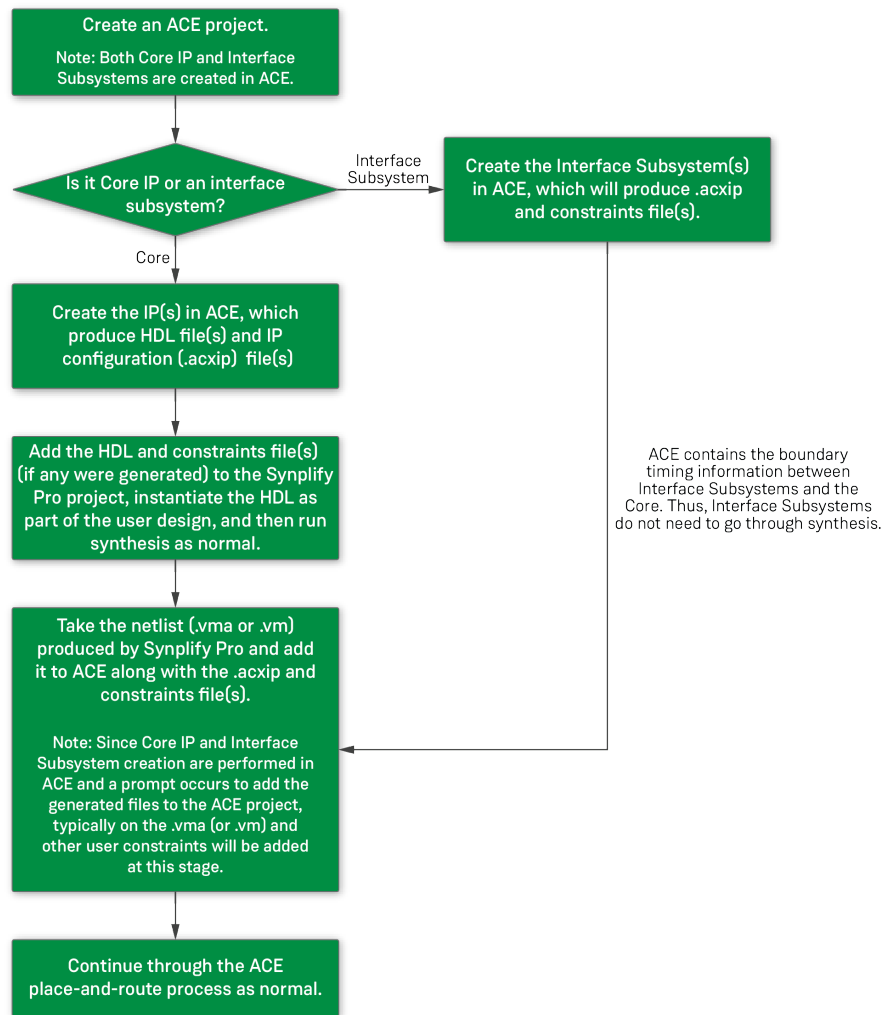
Achronix offers two types of IP:

- Core IP – traditionally thought of as "soft IP". In Achronix terminology, "core" is short for "fabric core" and is synonymous with what is traditionally thought of as "configurable fabric". It follows that these are IP cores located in the fabric of the device.

- Interface subsystems – traditionally thought of as "hard IP". The I/O ring holds the various interface subsystems that surround the core, including GPIO, PLLs, memory interfaces, and more. Hence the term, "I/O ring".

The natural question is, "How does IP fit into the tool flow?" The answer depends on which type of IP is being used, though both processes begin in ACE. If using Core IP, the synthesis run must include the output products of the IP generation. Namely, the Core IP HDL and constraints (if any are generated). Interface subsystems do not need to be synthesized in Synplify Pro because ACE contains the boundary timing information between them and the Core. However, constraints from interface subsystems are often useful in synthesis as they define things that would otherwise be needed (e.g., clocks are defined as part of the PLL configuration process).

See the image below for interface subsystem and Core IP flows:



70541507-02.2023.31.01

Figure 2: IP Flow

Chapter - 3: Launching Synplify Pro

Synplify Pro can be run in either the GUI or batch mode. Refer to the [ACE Installation and Licensing Guide \(UG002\)](#) for details on installing Synplify Pro and [Synthesis User Guide \(UG018\)](#) for more details on synthesis.

Note

To list the several options available when launching Synplify Pro, use the `-h` argument with the `synplify_pro` command.

GUI Mode

If a Synplify Pro shortcut or alias was not created, see the following table for the path to the program file.

Table 1: Synplify Pro File Paths

| Executable File | Typical Windows Path | Typical Linux Path |
|-----------------|--------------------------------------|-----------------------------------|
| synplify_pro | C:\Synopsys\ <version>\bin</version> | <install_path>/fpga/<version>/bin |

When executed, the following window is displayed:

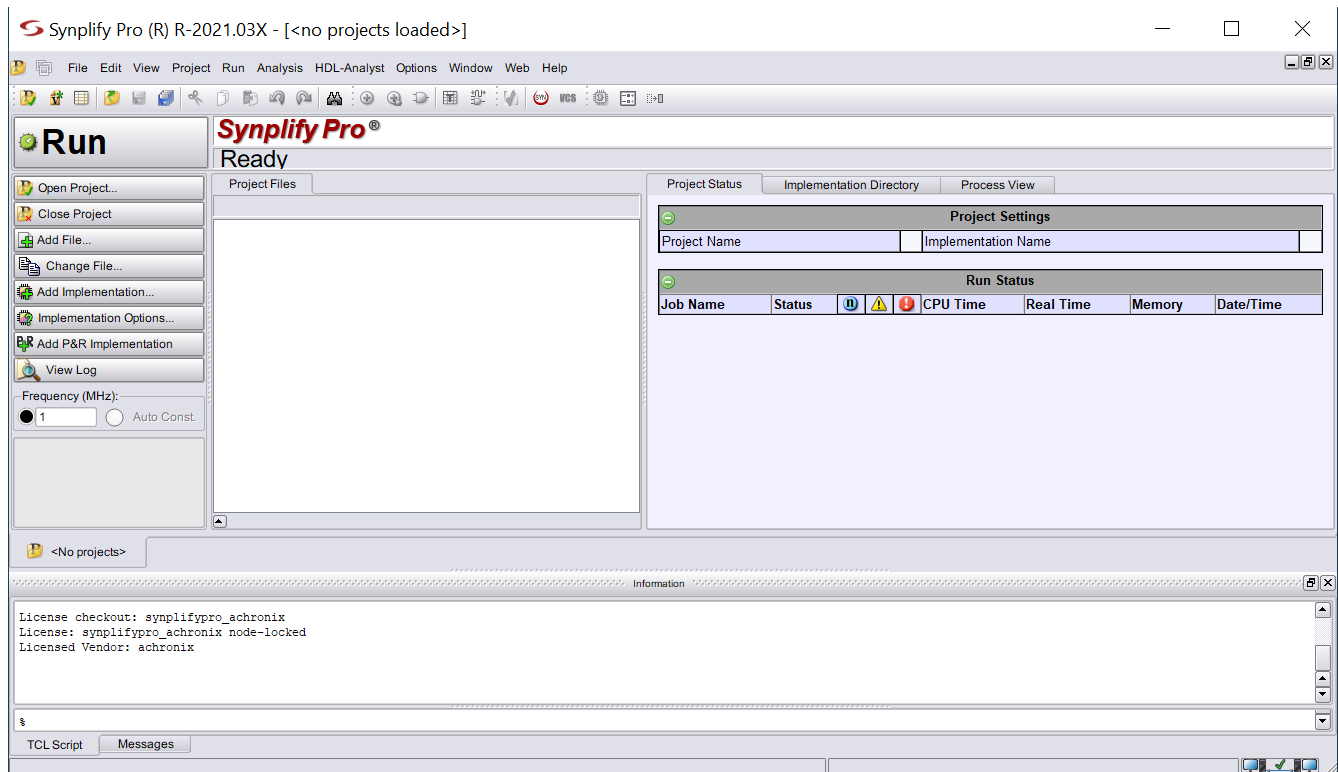


Figure 3: Synplify Pro Opening Display

Batch Mode

To run Synplify Pro in batch mode, use the `-batch` argument with the `synplify_pro` command. Reference designs support batch mode and have specific scripts for batch runs.

Note



A floating license is required in order to use batch mode with Synplify Pro.

Chapter - 4: ACE Execution Modes

ACE can be run with full functionality in three different modes:

1. GUI Mode
2. Command-line Mode
3. Batch Mode

For details beyond that covered in this guide, refer to the *ACE User Guide (UG070)*.

GUI Mode

If an ACE shortcut or alias does not exist, see the following table for the path to the executable program file.

Table 2: ACE Program File Path

| Executable File | Typical Windows Path | Typical Linux Path |
|-----------------|--|-------------------------------|
| ace | C:\Program Files\Achronix CAD Environment\Achronix | <install_path>/Achronix-linux |

To run in GUI mode, invoke the `ace` executable either with no options or with the `-gui` option. GUI mode launches the interactive window from which all commands are issued.

Starting ACE in GUI Mode, Implicit

```
% ./ace
```

OR

Starting ACE in GUI Mode, Explicit

```
% ./ace -gui
```

Command-line Mode

To run in command-line mode, invoke the `ace` executable with the `-b` option from a console. Command-line mode takes control of the console and allows interactive entry of Tcl commands at the command prompt.

Starting ACE in Command-line Mode

```
% ./ace -b
-- ACE -- Achronix CAD Environment -- Version 5.4 -- Build 84486- -- Date 2015-02-11 19:58
-- (c) Copyright 2006-2015 Achronix Semiconductor Corp. All rights reserved.
-- all messages logged in file /home/username/.achronix/ace_2015_02_13_11_00_11.log, created at 11
:00:11 on 02/13/2015
INFO: License ace-v1.0 on server acxlicense (9 of 10 licenses available). Running on docs.
achronix.local (x86_64).
ACE>
```

Batch Mode

To run in batch mode, invoke the `ace` executable with the `-b` option and the `-script_file` option. Reference designs support batch mode and have scripts to refer to as examples.

Starting ACE in Batch Mode

```
% ./ace -b -script_file <path_to_script_file>.tcl
```

Chapter - 5: The Quickstart Design

Introduction

The simple Quickstart design features a 2-bit binary up-counting LED display to indicate that the board and FPGA are operating properly upon powerup. The Quickstart design RTL along with the device-specific netlists and constraints are available under the <ACE_install_dir>Achronix/examples/quickstart directory.

The *Introduction to Achronix FPGA Design Tool Flow* video parallels this tutorial and offers a helpful addition to the learning process.

While this tutorial is intended to help gain familiarity with the tool flow, some details are omitted to keep it concise. Relevant user guides that provide additional details on the tools can be found at the end of each section.

Note

- i Screenshots in this tutorial use the AC7t1500 part with the F53A0 package and C2 speed grade. However, Quickstart design source files for a device are included in the respective device overlay.

Synthesizing with Synplify Pro

The Synplify Pro portion of this tutorial is summarized as follows:

- 1 File → New Project
- 2 Add File... → add source files
 - Add the relevant device model
 - Add design files, constraints
- 3 Implementation Options...
 - Synthesis/device options
- 4 When ready, run synthesis (the “implementation”)

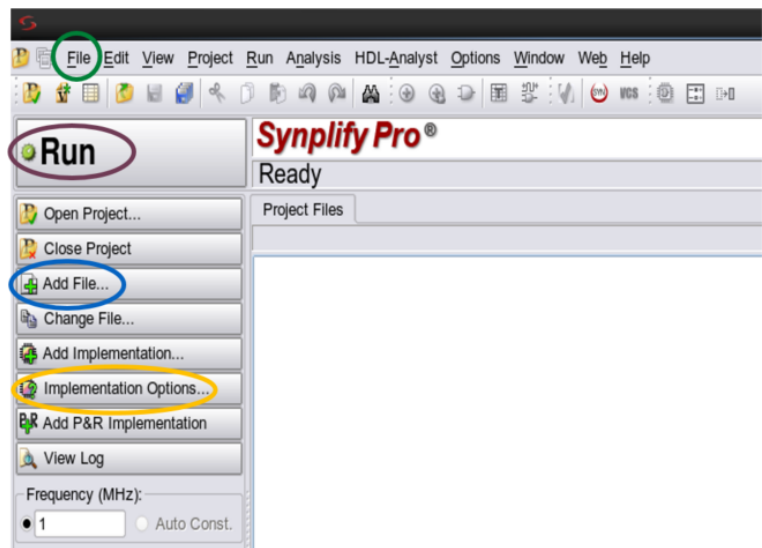


Figure 4: Overview of Synplify Pro Steps

Follow these steps to synthesize the Quickstart design with Synplify Pro:

1. Launch Synplify Pro and create a new project (select **File** → **New Project** from the menu). For details on launching Synplify Pro, see [Launching Synplify Pro](#) (see page 8).

2. Add the source files (click **Add File...** at the left-side of the Synplify Pro window). If already familiar with Synplify Pro, the `quickstart.vma` file contains the pre-generated design netlist. In this case, skip to [Running Place-and-Route in ACE \(see page \)](#).

Table 3: Synplify Project Files

| Files | Typical Windows Path | Typical Linux Path | Purpose |
|--|--|---|--|
| <code><device_name>_synplify.sv</code> | C:\Program Files\Achronix CAD Environment\Achronix\libraries\device_models | <install_path>/Achronix-linux/libraries/device_models | Makes Synplify Pro aware of the device information necessary to perform synthesis. This is NOT design-specific and is required for all designs. |
| <code>quickstart_<device_name>.v</code> and <code>counter.v</code> ⁽¹⁾ <code>(2)</code> | C:\Program Files\Achronix CAD Environment\Achronix\examples\quickstart\rtl | <install_path>/Achronix-linux/libraries/examples/quickstart/rtl | Design RTL files. |
| <code>quickstart_<device_name>_ioring.sdc</code> ⁽³⁾ | C:\Program Files\Achronix CAD Environment\Achronix\examples\quickstart\<device_name> | <install_path>/Achronix-linux/libraries/examples/quickstart/<device_name> | The .sdc file type stands for Synopsys Design Constraints. While SDC files are normally capable of also constraining timing, power, and area, the ACE flow differs in that SDCs are only used for timing constraints. In this case, a clock is defined. If the file name does not appear, select Files of type → All Files (*.*) . |

Table Notes

1. If using a Speedcore device, use the `quickstart.v` file instead.
2. If using the AC7t1500, also add the `quickstart_AC7t1500_top.v` file.
3. If using a Speedcore device, use the `quickstart.sdc` file instead.



Tip

Files with "ioring" in their name are generated as part of the I/O ring flow. In this tutorial, these files have already been generated in order to expedite the introduction to the tools.



Note

Synplify Pro compiles files from the top down. In practice, this means the design hierarchy should be inverted: the lowest level files should be at the top (this is usually the device model file, `<device_name>_synplify.sv`) and files are hierarchically organized *downward* towards their top-level file at the bottom. See the screenshot below for an example using this design.

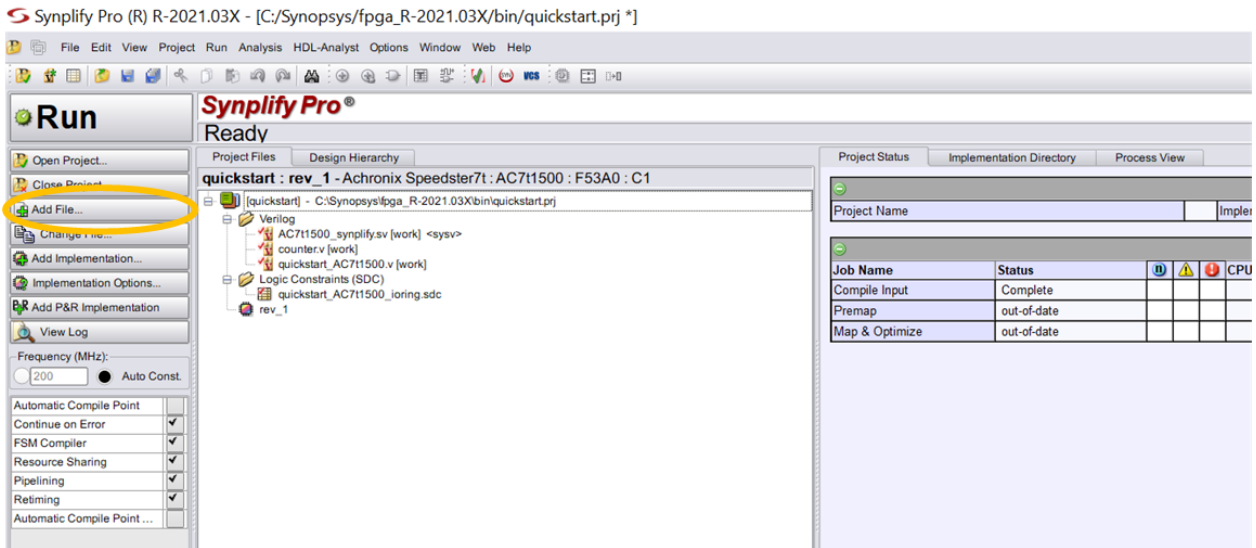


Figure 5: Source Files Added to Synplify Pro Project

3. Select the device and set other house-keeping items (click **Implementation Options...** at the left-side of the Synplify Pro window):

- **Device Tab** – select the **Technology**, **Part**, **Package**, and **Speed** parameters that match the desired device.

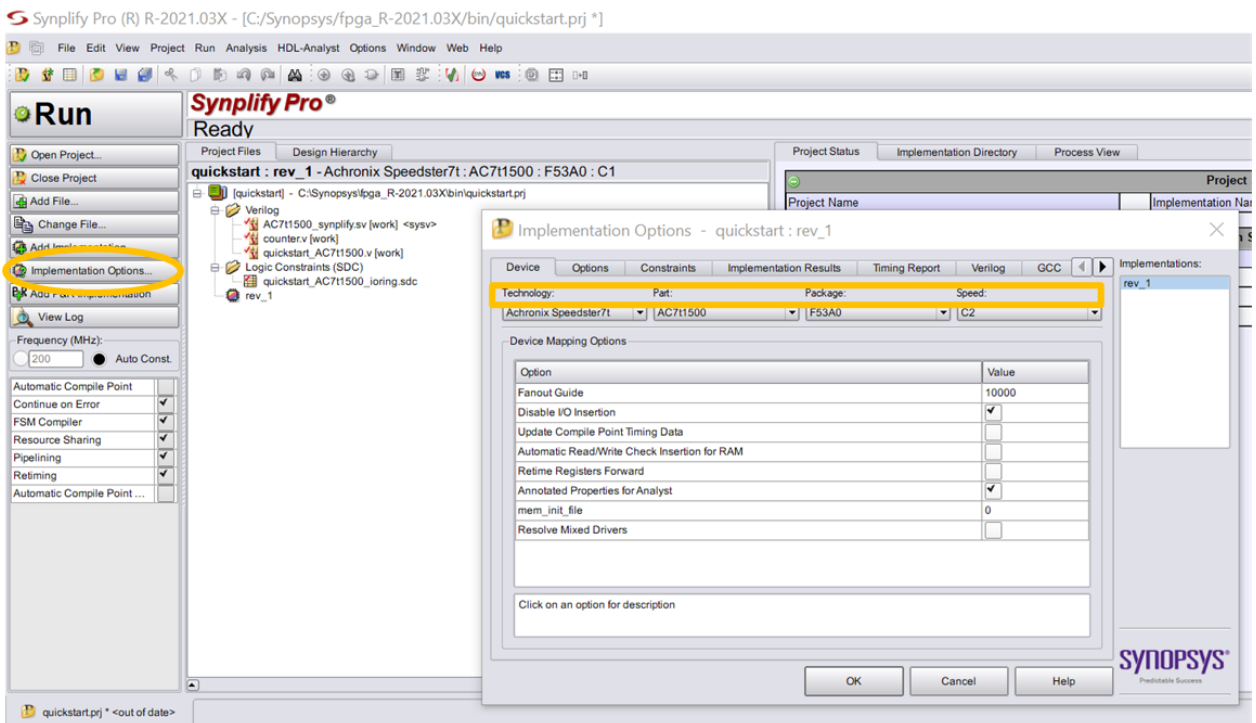


Figure 6: Device Tab of Implementation Options Window

- **Implementation Results** Tab – select where synthesis products are output via the **Results Directory** value. The **Implementation Name** value determines the final part of the **Results Directory** path string. This feature allows creating multiple synthesis runs in the same parent directory simply by changing the **Implementation Name** value for each run.

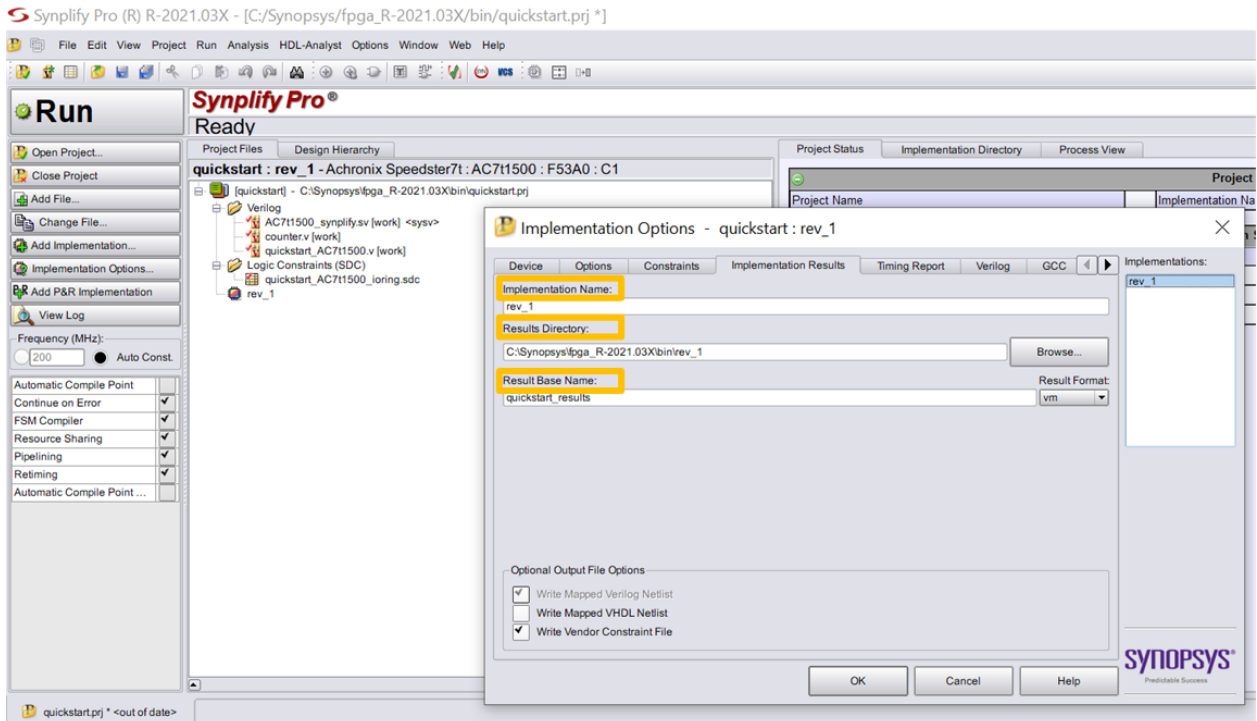


Figure 7: Implementation Options Window Results Tab

- **Verilog** Tab – set the **Top Level Module** to the name of the top-level module (the file type is not necessary, just the name).
 - Set **Include Path Order**: to the libraries directory in your ACE installation path. Typically this is at `C:\Program Files\Achronix CAD Environment\Achronix\libraries\` for Windows and `<install_path>/Achronix-linux/libraries/` for Linux. This enables Synplify Pro to use the Achronix libraries.
 - The **Compiler Directives** option is not used for the Quickstart design. In future designs, add desired compiler directives here.

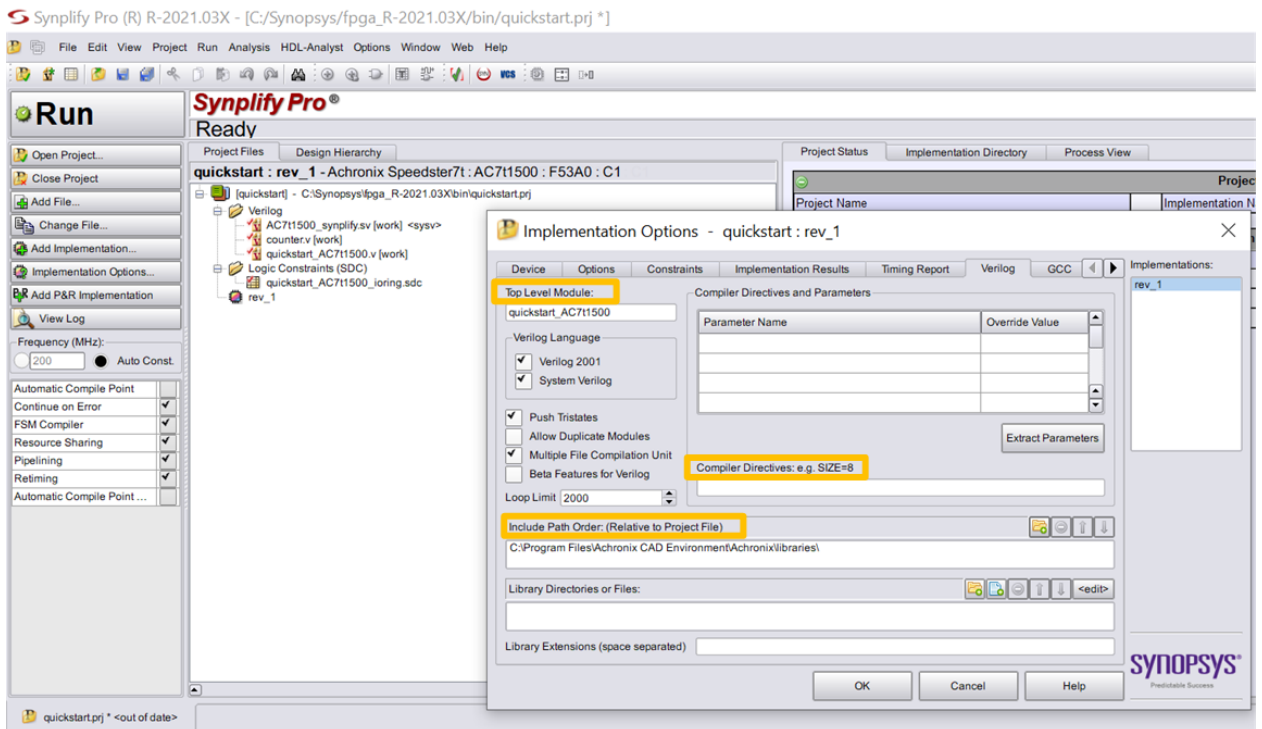


Figure 8: Implementation Options Window Verilog Tab

The following tabs are not used in this tutorial but might be useful in future designs:

- **Options** Tab – contains options like pipelining, retiming, and continuing through synthesis errors.
- **Constraints** Tab – offers an alternative to adding constraints instead of adding them through the **Add File...** button.
- **Timing Report** Tab – specify the number of reported critical paths and start/end paths. Does not set a limit on the number of critical paths or start/end paths considered by the tool, only the ones reported.
- **GCC** Tab – specifies how gated and generated clocks are handled.
- **Place and Route** Tab – not used in the Achronix tool flow because place-and-route is performed in ACE.

4. Synthesize the design (click the big **Run** button on the top-left of the window).

When synthesis finishes, a synthesized netlist (denoted by the .vma or .vm file-type) is generated in the **Results Directory** (value set earlier). Any errors, warnings, and informational messages can be found in the **Project Status** window. If desired, the project can be saved by selecting **File** → **Save As...** from the menu. See [Synthesis User Guide \(UG018\)](#) for more information on Synplify Pro and synthesis.

Creating Interface Subsystems and Running Place-and-Route

Follow these steps to process the Quickstart design in ACE:

1. Launch ACE and create a new project (select **File** → **Create Project...** from the menu). See [Launching ACE](#) (see page 10) for details.

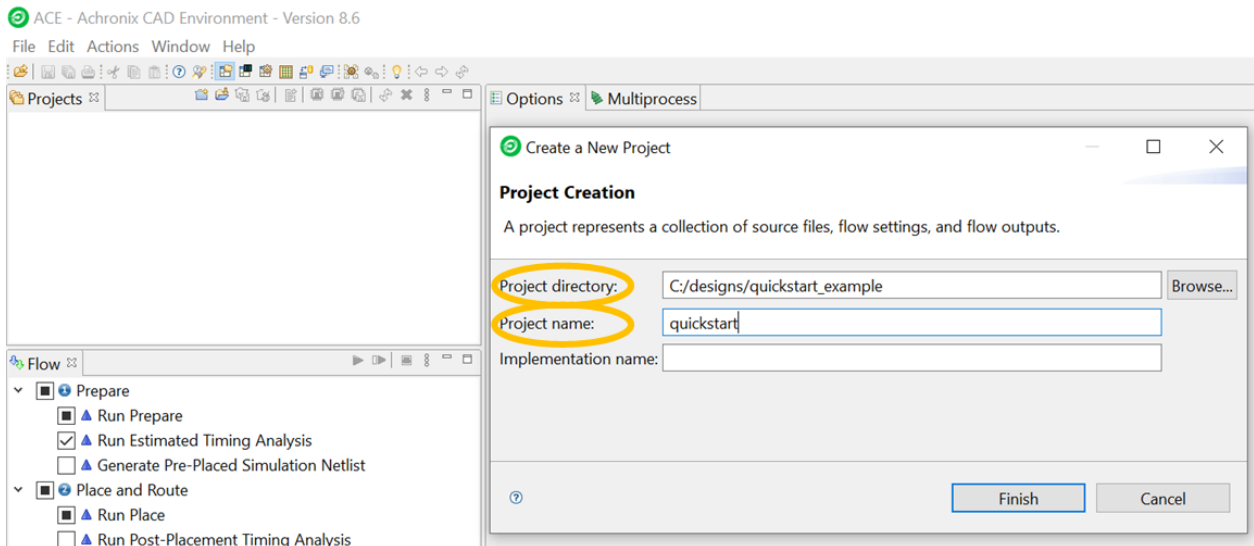


Figure 9: New Project Creation Prompt

2. Set the **Project directory** value to the desired directory in which to store the project.
3. Set the **Project name** value to "quickstart".
4. If the **Implementation name** value is left blank, the name defaults to `impl_1`.
5. To see how the interface subsystems were created, see [Creating Interface subsystems](#) (see page 20). If only interested in the ACE flow and not interface subsystem creation, continue to the next step.
6. Add the following files for ACE (select **File** → **Add Project Source Files...** from the menu, or click the circled button as shown in the image below):

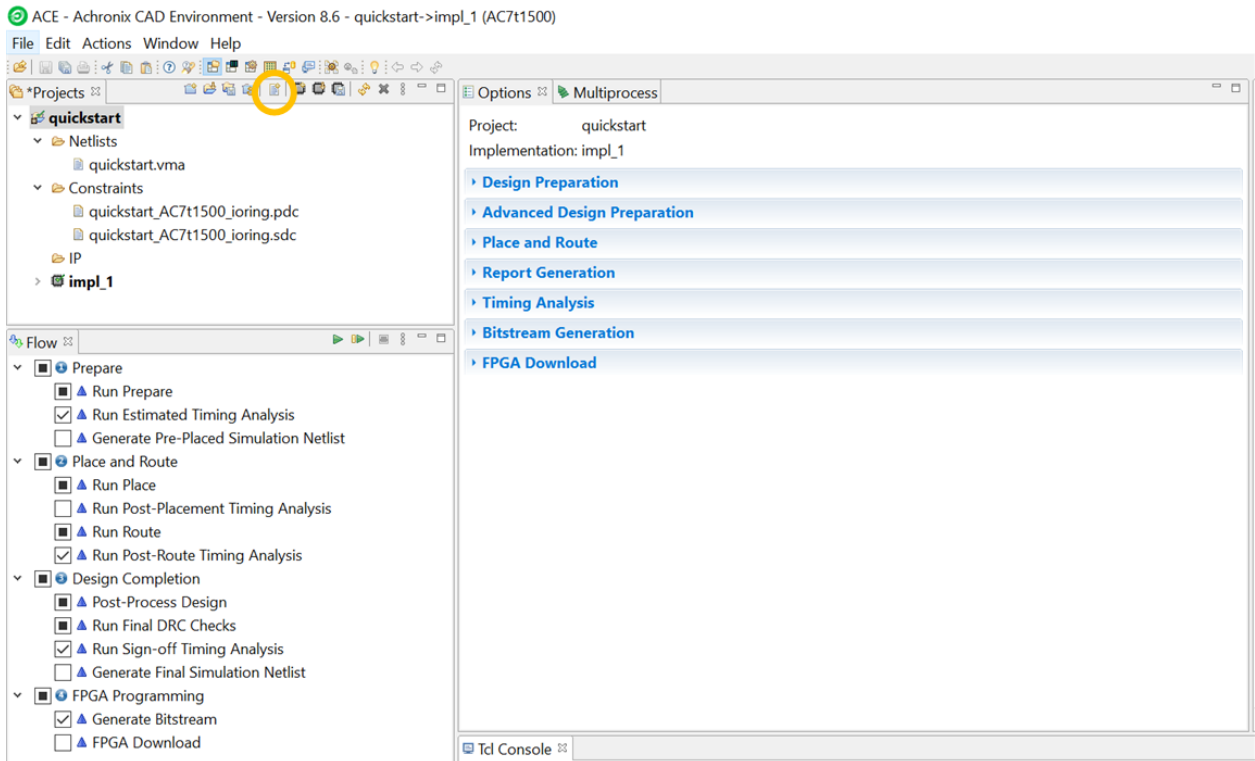


Figure 10: ACE Add files Button

Table 4: ACE Project Files

| Files | Typical Windows Path | Typical Linux Path | Purpose |
|--|---|---|--|
| quickstart.vma or quickstart.vm | C:\Program Files\Achronix CAD Environment\Achronix\examples\quickstart\ <device_name> ⁽¹⁾ | <install_path>/Achronix-linux/libraries/examples/ quickstart/<device_name> | The netlist generated from Synplify Pro. |
| quickstart_<device_name>_ioring.sdc ⁽²⁾ | C:\Program Files\Achronix CAD Environment\Achronix\examples\quickstart\ <device_name> | <install_path>/Achronix-linux/libraries/examples/ quickstart/<device_name> | The .sdc file type stands for Synopsys Design Constraints. Only used for timing constraints. While SDC files are normally capable of also constraining power and area, the ACE flow differs in this regard. In this tutorial, a clock is defined. |
| quickstart_<device_name>_ioring.pdc ⁽³⁾ | C:\Program Files\Achronix CAD Environment\Achronix\examples\quickstart\ <device_name> | <install_path>/Achronix-linux/libraries/examples/ quickstart/<device_name> | The .pdc file type stands for Physical Design Constraints. Typical usage is to constrain I/O, placement, and routing. Since these are physical constraints, they are only used in the ACE tool as part of place-and-route. In this tutorial, pins are defined and their placement set. |

Table Notes

1. Use the path shown if already familiar with Synplify Pro. Otherwise, use the path set for **Results Directory**.
2. If using a Speedcore device, this file is named quickstart.sdc.
3. If using a Speedcore device, this file is named quickstart.pdc.

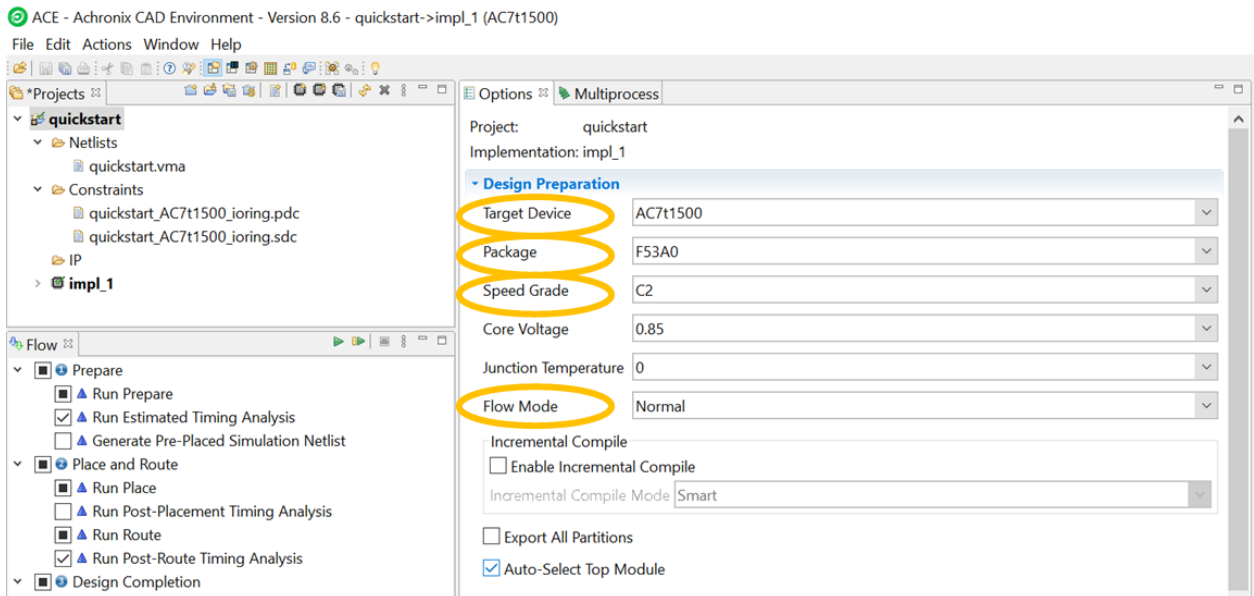
7. Select the **Design Preparation** section within the **Options** tab.

Figure 11: Design Preparation Section of Options Tab

8. Set the **Target Device**, **Package**, and **Speed Grade** values.

For **Speed Grade**, the value is marked on the package. **C3L** is the slowest, **C2** is in the middle, and **C1** is the fastest.

Flow Mode can be set to **Evaluation**, **Normal**, or **Strict**. Of the three options, **Evaluation** results in the fastest time to produce a placed-and-routed design but bitstream generation requires either **Normal** or **Strict**. If the goal is to generate a bitstream, set **Flow Mode** to **Normal**.

Other than the settings above, this design uses the default values. There are other fields that are useful in future designs:

- **Package** – the package of the device.
- **Core Voltage** – the operating voltage of the device.
- **Junction Temperature** – the expected junction temperature. While many factors affect timing, this value directly affects which timing libraries are used.

- Click the play button (circled) to run the place-and-route flow which, upon completion, produces a bitstream. If **Flow Mode** was set to **Evaluation**, ACE completes place-and-route and timing analysis, but does not produce a bitstream.

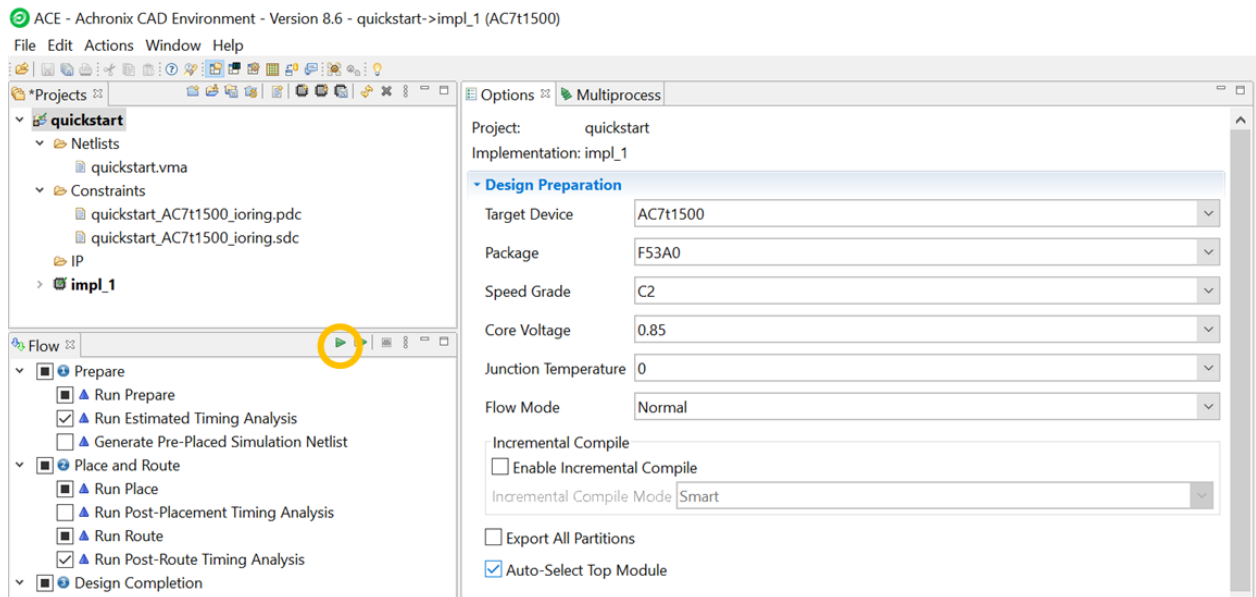


Figure 12: Place-and-route Play Button

This completes the tutorial. A number of reports generated from the run are displayed such as timing, utilization, and pin assignments. If desired, the project can be saved by selecting **File** → **Save Project As...** from the menu. See the [ACE User Guide \(UG070\)](#) for more information on ACE.

Creating Interface Subsystems

The quickstart design uses the following interface subsystems:

- Clock signals enter and exit the device via Clock I/O Banks. In this case, a Clock I/O Bank routes an incoming, external clock to a PLL.
- The PLL uses the incoming clock from the Clock I/O Bank (`sys_clock`) as the reference clock. The PLL synthesizes and outputs the clock used for the core logic (`clk`).
- A GPIO Bank outputs the counter data from the core to two LEDs (`quickstart_gpio_bank_data[0]` and `quickstart_gpio_bank_data[1]`).



Tip

Interface subsystems *are not instantiated* in the user design. Signals are added going between the interface subsystems (which are located in the I/O ring) and core by listing them as part of the top-level design port list, after which ACE makes the connection during place-and-route.

The following steps summarize creating each interface subsystem:

1. Navigate to the IP Configuration Perspective. Perspectives are preset configurations of various windows in ACE.

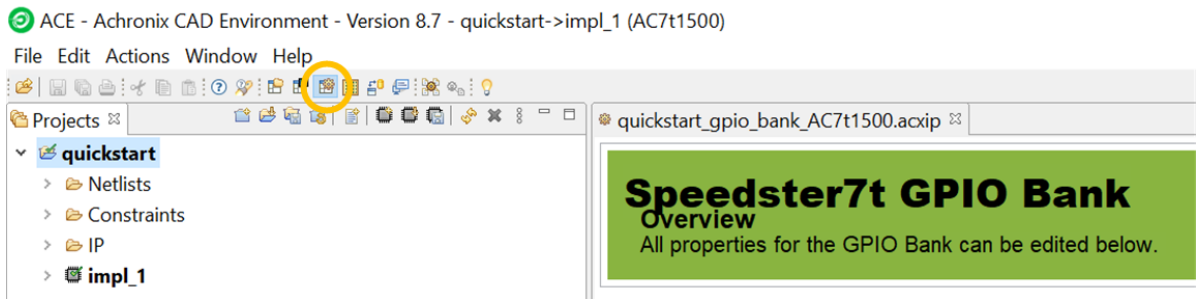


Figure 13: IP Configuration Perspective button

2. In the **IP Libraries** window, under **IO Ring**, double-click **Clock I/O Bank**. The file name is the name of the configuration. A common practice is to create a directory called *acxip* at the same level as the ACE project, and then store all *.acxip* files in that directory. Configure the subsystem to match the screenshot below. Namely,

- Set **Placement** to `CLKIO_NE`.
- Enable the clock I/O on **Ball, N16** by checking the box on the same line under **Enabled**. Then, triple-click the **I/O Instance Name** associated with it and change it to `sys_clock`.
- Other settings should default to the desired configuration. The screenshot below can be used as a reference for the other fields:

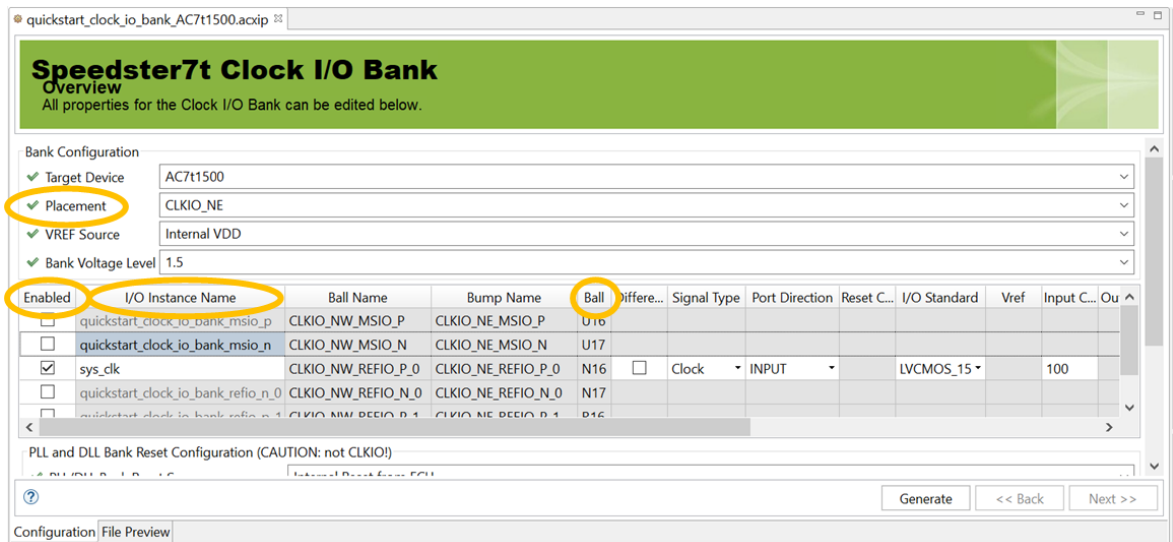


Figure 14: Clock I/O Bank configuration

3. In the **IP Libraries** window, under **IO ring**, double-click **PLL**. Configure it to match the screenshot below. Namely,
 - a. Set **Placement** to `PLL_NE_0`.
 - b. Set **Reference Clock Name** to `sys_clk`, the clock entering the device via the Clock I/O Bank.
 - c. Set **clkout0 Desired Frequency** to 500.
 - d. Set **Clkout Output 0 Port Name** to `clk`.
 - e. Other settings should default to the desired configuration. The screenshot below can be used as a reference for the other fields.

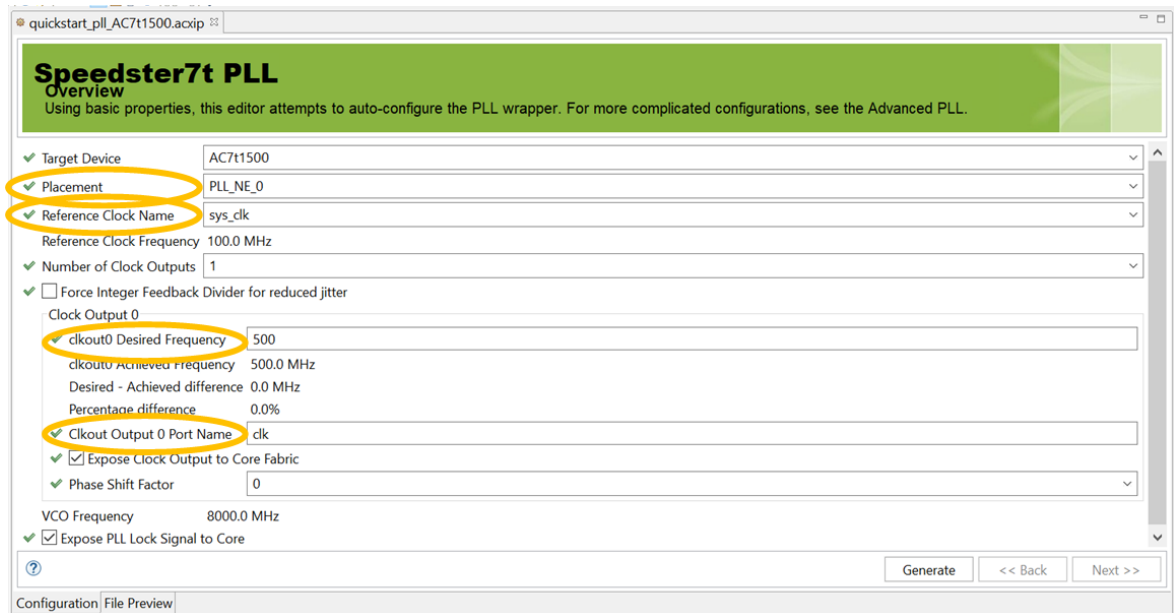


Figure 15: PLL configuration

4. In the **IP Libraries** window, under **IO ring**, double-click **GPIO Bank**. Configure it to match the screenshot below. Namely,
 - a. Set **Placement** to GPIO_N_B0.
 - b. Enable the I/O on **Ball, W17** by checking the box on the same line under **Enabled**. Then, triple-click the **I/O Instance Name** associated with it and change it to `quickstart_gpio_bank_data [0]`. Set **Port Direction** to OUTPUT.
 - c. Enable the I/O on **Ball, W16** by checking the box on the same line under **Enabled**. Then, triple-click the **I/O Instance Name** associated with it and change it to `quickstart_gpio_bank_data [1]`. Set **Port Direction** to OUTPUT.
 - d. Other settings should default to the desired configuration. The screenshot below can be used as a reference for the other fields.

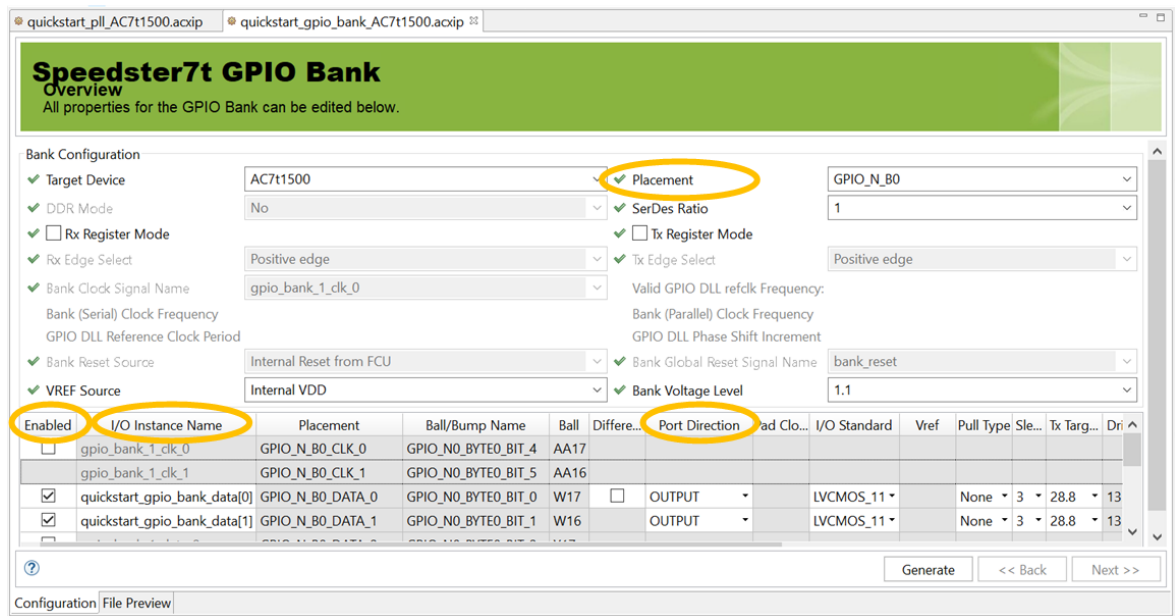


Figure 16: GPIO Bank Configuration

5. After saving all the .acxip files, click the **Generate** button in *any* of the interface subsystem configuration windows to initiate the generation process for *all* configured subsystems. A common practice is to create a directory called *ioring* at the same level as the ACE project, and then store all generated interface subsystem files in that directory.

6. While each subsystem has a `.acxip` file associated with it, other files are also generated as part of the interface subsystem flow. In particular, multiple SDC files that cover different PVT points and simulation support files are created. Selecting **Add to active project** adds the generated files relevant to the ACE project (as opposed to generated files that support simulation), and is considered best practice. Doing so adds the following files:
- `<proj>_ioring.sdc`: constraints for clock definitions of clocks to core
 - `<proj>_ioring_timing_delays_<speedgrade_voltage_temp_corner>.sdc`: constraints for timing delay of signals between core and I/O ring
 - `<proj>_ioring.pdc`: constraints for pin placement for core to interface subsystem interface
 - `<proj>_ioring_util.xml`: used for bitstream generation
 - `<proj>_ioring_bitstream*.hex`: the `.hex` file associated with each interface subsystem is taken and combined to produce two of these files (`<proj>_ioring_bitstream0.hex` and `<proj>_ioring_bitstream1.hex`). These two files are used as part of the final bitstream generation for the ACE project.
7. Continue with the [quickstart steps](#) (see page 17).

For more information on clocking, see the [Speedster7t Clock and Reset Architecture Guide \(UG083\)](#).

Chapter - 6: FAQs

Why is my device not listed in Synplify Pro or ACE?

This is likely because the device overlay was not correctly installed. See [ACE Installation and Licensing Guide \(UG002\)](#).

Which simulators are supported?

VCS (Synopsys), QuestaSim (Mentor), Incisive (Cadence), and Riviera (Aldec). Achronix does not distribute or provide these simulator tools.

I am in a perspective, but I would like to add a window from a different perspective. How do I do this?

Most windows can be added by selecting **Window** → **Show View** from the menu. Select the desired window or select **Other** to see all windows that can be added.

I loaded an ACE project, but the information on its implementation is missing. How do I get that information?

Loading a project does not load its implementation run. After loading the project, right-click the implementation and select **Restore Implementation**.

How can I drive or observe signals when my device is running?

The Snapshot Debugger, found within ACE, can both drive and observe signals. See [Snapshot User Guide UG016](#) for more details.

I am stuck and my question is not shown here. Who can I contact for help?

Contact Achronix at support@achronix.com

Revision History

| Version | Date | Description |
|---------|-------------|--|
| 1.0 | 26 Jan 2022 | <ul style="list-style-type: none">• Initial Achronix release. |
| 1.1 | 19 Jul 2022 | <ul style="list-style-type: none">• Updated terminology: the I/O ring holds the various interface subsystems.• Added instructions on creating the interface subsystems used in the Quickstart d• The Device Speed option C3 is being deprecated and replaced by C3L. |
| 1.2 | 13 Oct 2023 | <ul style="list-style-type: none">• Remove references to end-of-life devices. |